

# PTIN Food Safety Incident Management Workshop

Big Sky, Montana, USA  
14-15 May 2011

Asia-Pacific Economic Cooperation (APEC)  
Food Safety Cooperation Forum (FSCF)  
Partnership Training Institute Network (PTIN)



Asia-Pacific  
Economic Cooperation



**FSCF** Food Safety  
Cooperation Forum  
**PTIN** Partnership Training  
Institute Network



**FOOD** STANDARDS  
Australia New Zealand  
Te Mana Kounga Kai - Ahitereiria me Aotearoa

# Food Safety Incidents Management in the Chilean Government

APEC FSCF PTIN Incident Management Workshop  
Montana, U.S.,  
May, 2011

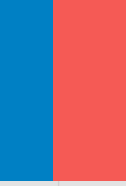


Ministerio de  
Salud

Gobierno de Chile

José Miguel Sepúlveda Torres, DVM, MPVM (c)  
Adviser Sanitary and Phytosanitary Subdepartment  
Market Access Department – Ministry of Foreign Affairs - Chile

Claudio Báez Beltrán, DVM, M.Sc  
Department of Food and Nutrition  
Regional Health Secretariat  
Ministry of Health - Chile



# Outline:

- Role and presence of the Ministry of Health.
- Regulatory Laws.
- Imported foods.
- Local production and domestic use.
- Information and procedures flow in foods emergencies / incidents.
- Role of the Ministry of Foreign Affairs - DIRECON



# Role of the Ministry of Health (MINSAL)

## FOOD SAFETY AREA:

MINSAL is responsible of protecting consumers health, promoting healthful nutritional habits and it has legal attributes in reducing all kind of contaminants in foods, assuring the safety and quality of them. To comply with this role, the Ministry takes permanent sanitary control and inspection measures appropriately at each stage of the food chain.

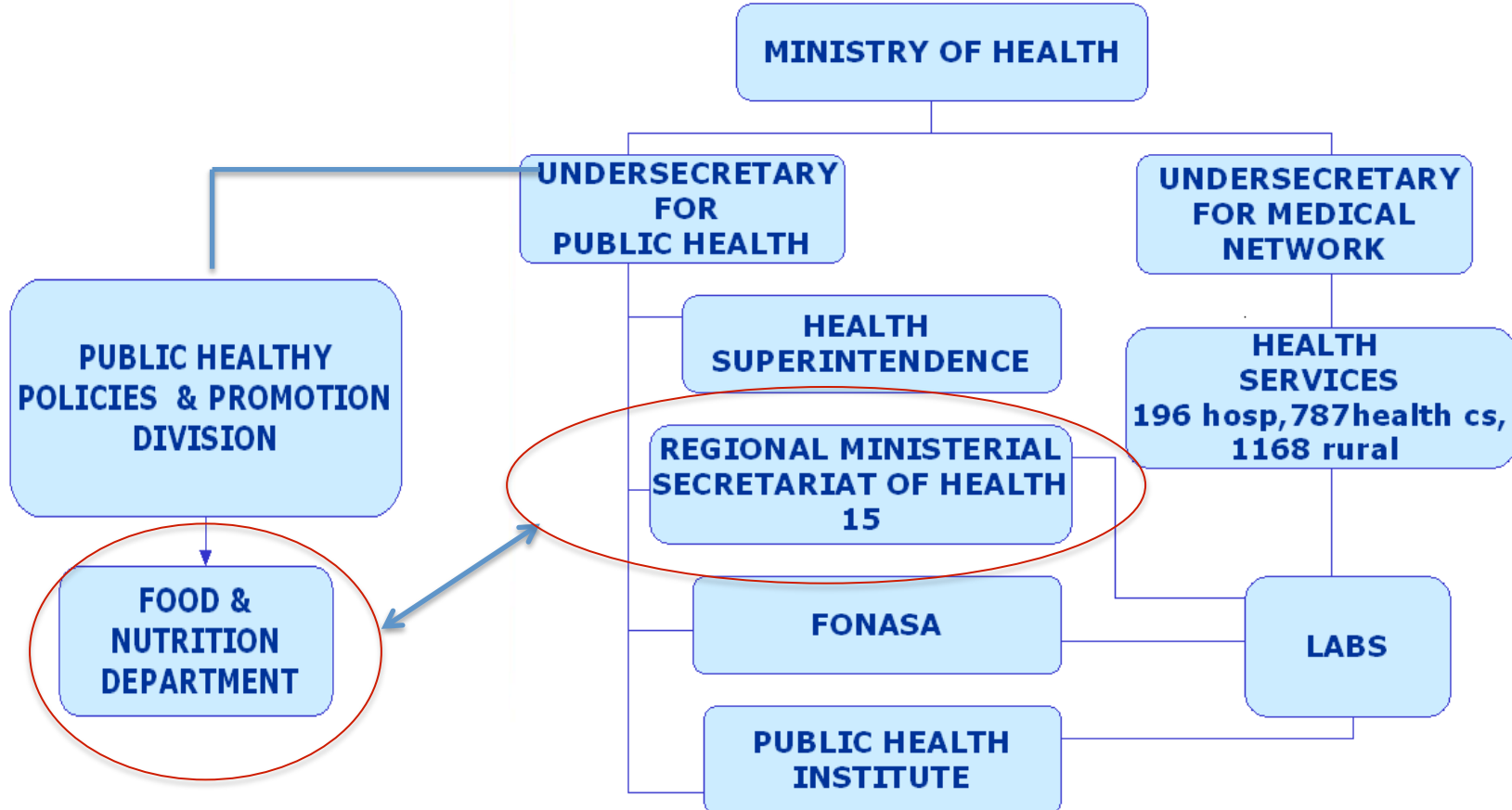
# Presence of the Ministry of Health

- The Ministry of Health is the National Sanitary Authority in charge of sanitary administration and control on food products for domestic use (imported food and local production).
- In each region (15) of country have presence by Seremi (Regional Health Secretariats) office.
- 23 Regional food laboratories along the country.





# ORGANIZATION CHART



# Responsibilities of the Regional Health Secretariats (SEREMI): From regional to local level:

- Food establishment authorization
- Sanitary inspection on Food establishments
- Control and surveillance of food
- Meat and poultry inspection (National level)
- **Control of Food Imports**
- Monitoring, Investigation and control of food poisoning
- Control of labeling
- Monitoring and controlling poisonings by Red Tide with National Fisheries Service.



# Regulatory laws

## GENERAL CONDITION OF FOOD CONTROL AND INSPECTION

- **The Sanitary Code** is the main official regulatory document on sanitary matters, assigning responsibilities and authority to the different regulatory bodies, and constitutes the basis for the more specific regulations.

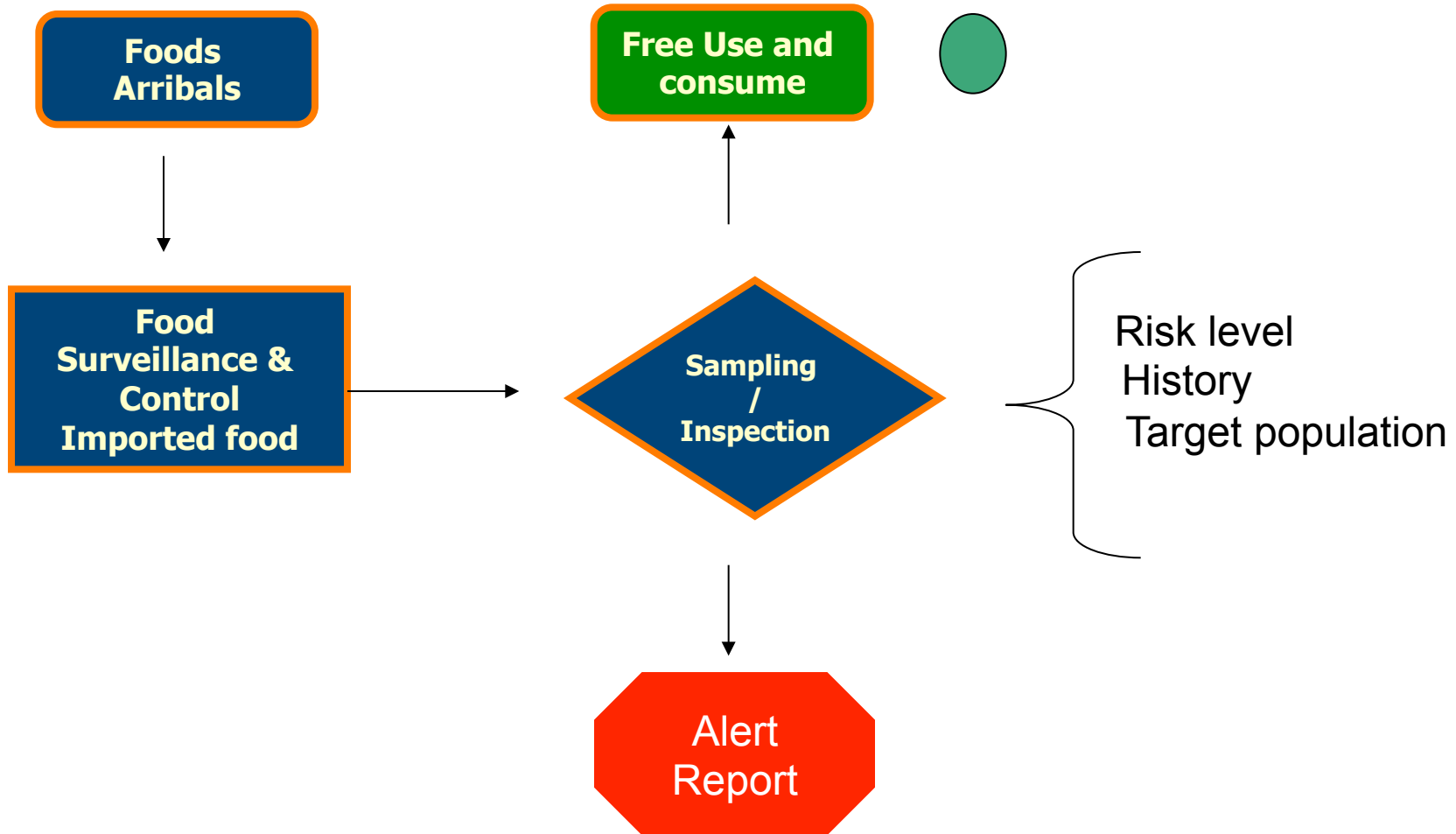
- **The Food Sanitary Regulation** is the document that regulates all those matters concerning manipulation, storage and manufacture of food products. It also specifies the nutritional qualities, and the maximum levels permitted of chemical and biological residues.





# Imported foods incidents:

Aim: Prevent the entry of altered (any cause) food





### INFORME RECHAZO DE ALIMENTOS IMPORTADOS

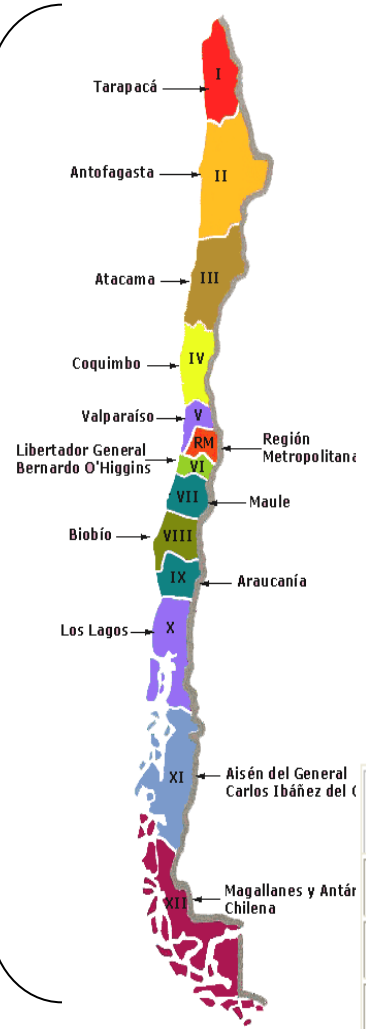
Alert Report  
Local Level

Undersecretary of  
Public Health

PUBLIC HEALTHY  
POLICIES & PROMOTION  
DIVISION

FOOD &  
NUTRITION  
DEPARTMENT

Food destruction  
Re-Export food



SECCIÓN 1	IDENTIFICACIÓN DEL PRODUCTO
Nombre del producto	ANTIESPUMANTE EROL -ADT -50 K Plyetherpolyol
Naturaleza del producto (según RSA)	COADYUVANTE EN LA ELABORACION DE AZUCAR
Cantidad del producto	26 Ton (26.000 Kg)
Tamaño del envase	2 containers con 26 paquetes
Numero de lote	No informa
Fecha de producción	No informa
Otros marcas o números de identificación	containers ipxu-312527-5 (con 8 paquetes) container ipxu 315571 -0 (con 18 paquetes)
País de Origen	Francia
Razón Social del fabricante	OUVRIE PMC
Dirección del Fabricante	64 rue Faidherbe - B.P.127 -59811 LESQUIN - Cedex - Francia

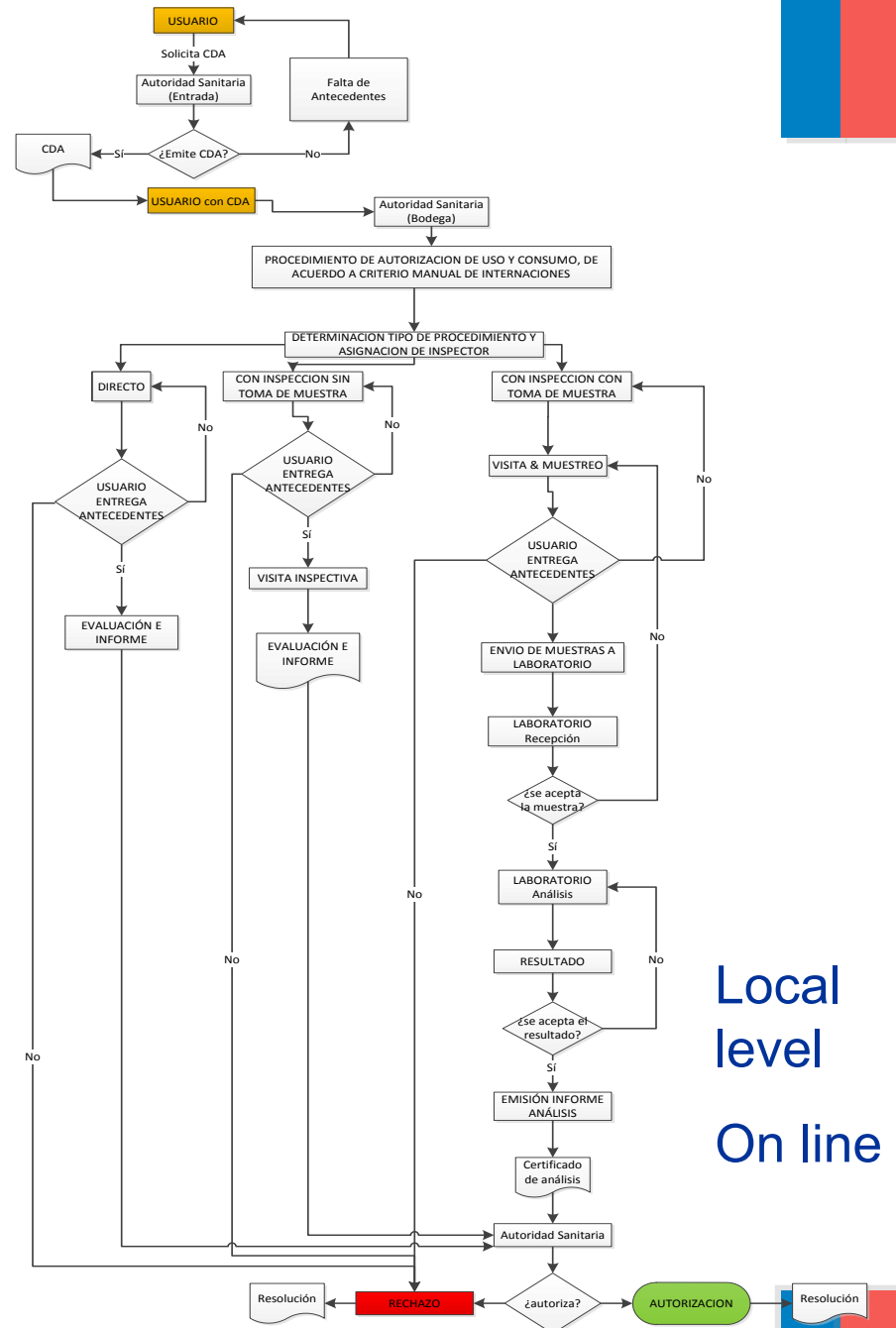
SECCIÓN 2	ANTECEDENTES DEL RECHAZO	
SEREMI DE SALUD que efectúa el rechazo	Seremi Salud V Región	
Fecha de la decisión	03 Abril 2006	
Número de resolución de rechazo	ORD Nº 612/13.04.2006	
Rechazo partida de importación	Completa X	Parte (especificar)
Identificación del motivo de rechazo	No cumple con el art 158º del Reglamento Sanitario de los Alimentos	



# User On line



TRAIL RUN



Local level  
On line



# Food & Nutrition Department Food Safety Incident Management Program Team

Contact directly to:

- Silvia Baeza (chief): [sbaeza@minsal.cl](mailto:sbaeza@minsal.cl)
- Alejandra Vaquero: [avaquero@minsal.cl](mailto:avaquero@minsal.cl)
- Marcelo Ulloa: [mulloa@minsal.cl](mailto:mulloa@minsal.cl)

# Surveillance of imported foods system

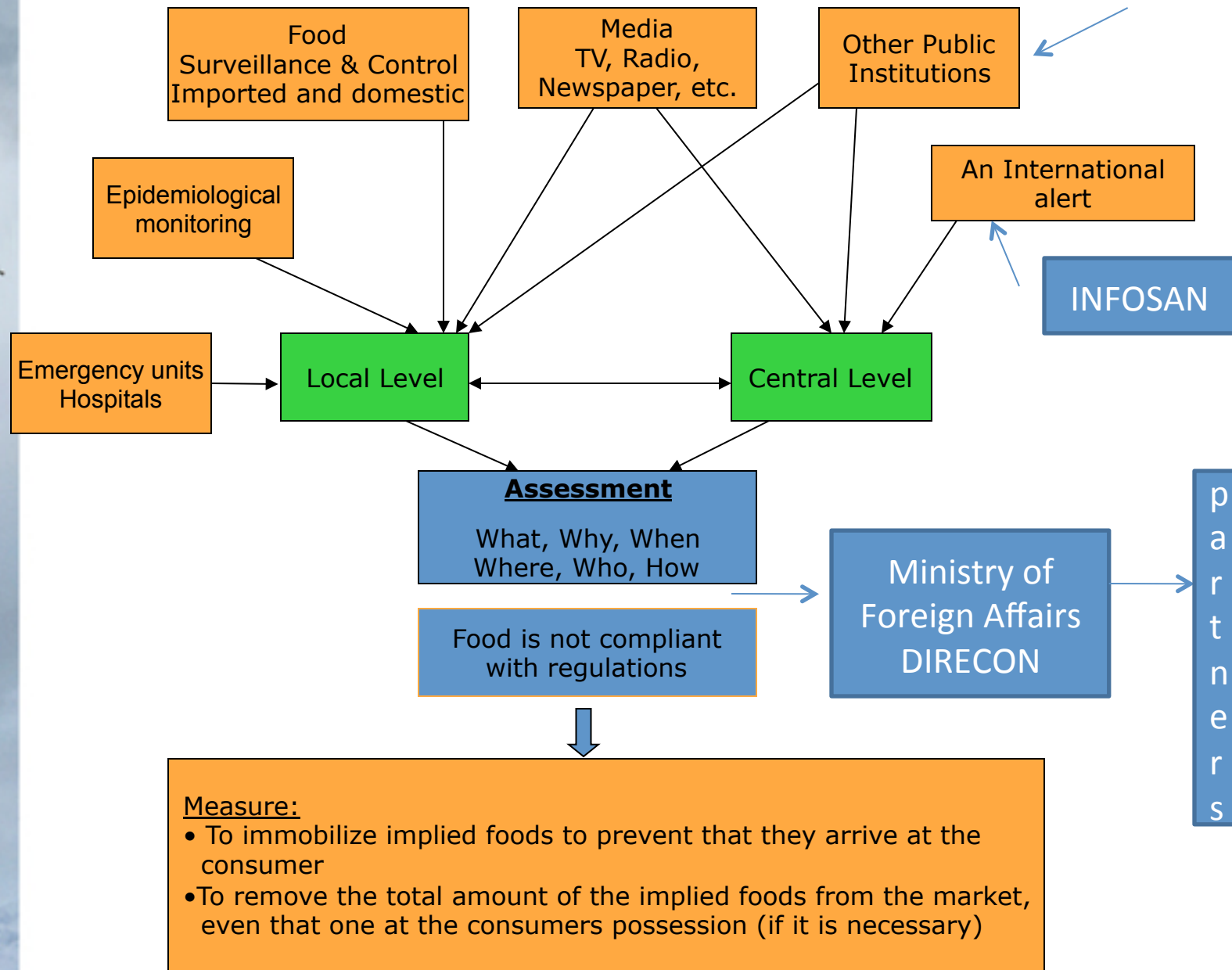


- To have an information system of food rejections.
- Improve the capacities referred to stop the movement of dangerous food products.
- Exchange information on food safety with our business partners.
- Establish an information network that make analysis and decision.



# INCIDENTS FLOW & ACTIONS

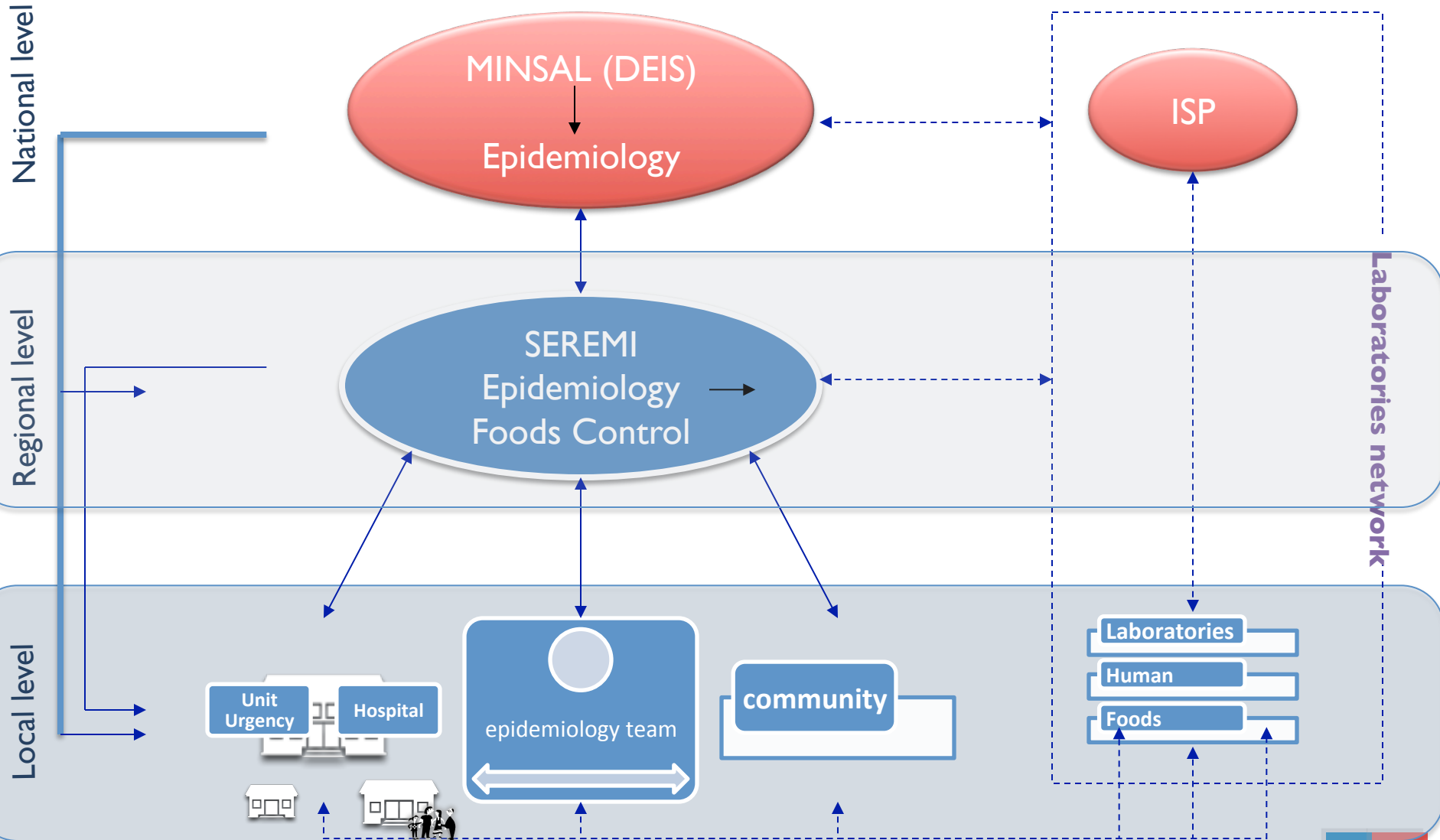
Ministry of Foreign Affairs



## Measure:

- To immobilize implied foods to prevent that they arrive at the consumer
- To remove the total amount of the implied foods from the market, even that one at the consumers possession (if it is necessary)

# Surveillance of foodborne outbreaks



# Role of the Ministry of Foreign Affairs in Food Safety Incident Management

- The Association Agreement between Chile and the European Union establishing a political and economic association that covers a wide range of areas.
- It was signed on 18 November 2002.



# Role of the Ministry of Foreign Affairs in Food Safety Incident Management

- **Sanitary and phytosanitary measures** are included in the Agreement.
- An Agreement in this area is attached as Annex IV and a special committee is set up.
- The Agreement will facilitate trade in animals and animal and plant products whilst safeguarding public, animal and plant health.
- **Article 12: Exchange of Information – RASFF System**.

# RASFF: Rapid Alert System for Food and Feed from the European Union.

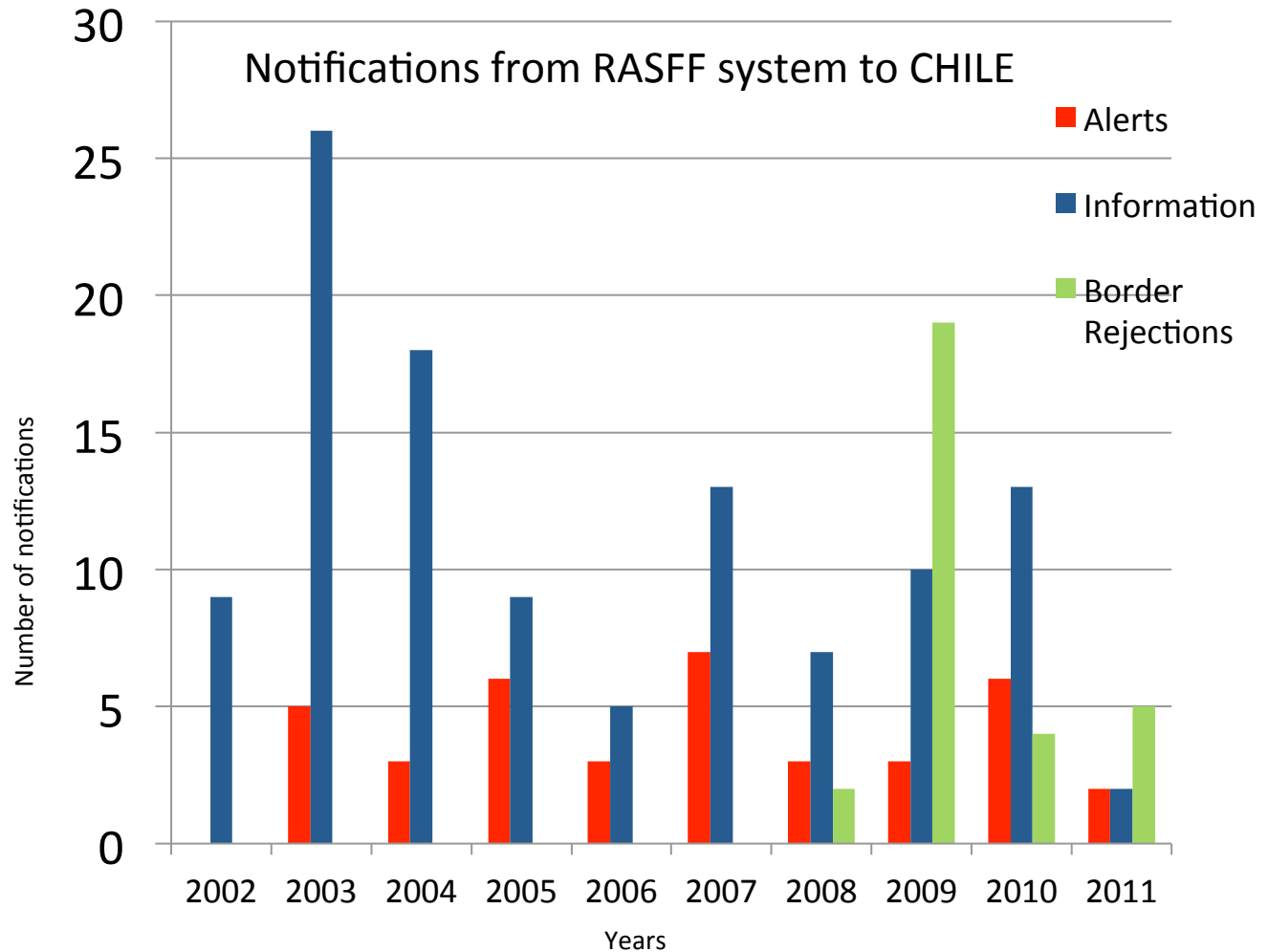
- The Rapid Alert System for Food and Feed (RASFF) is primarily a tool for exchange of information between competent authorities on consignments of food and feed in cases where a risk to human health has been identified and measures have been taken, such as withholding, recalling, seizure or rejection of the products concerned.

# RASFF: Rapid Alert System for Food and Feed from the European Union.

- This quick exchange of information allows all Member States to verify immediately whether they are also affected by the problem.
- Whenever the product is already on the market and should not be consumed, the Member States' authorities are then in a position to take all urgent measures, including giving direct information to the public, if necessary.

# Chilean Experience with RASFF System

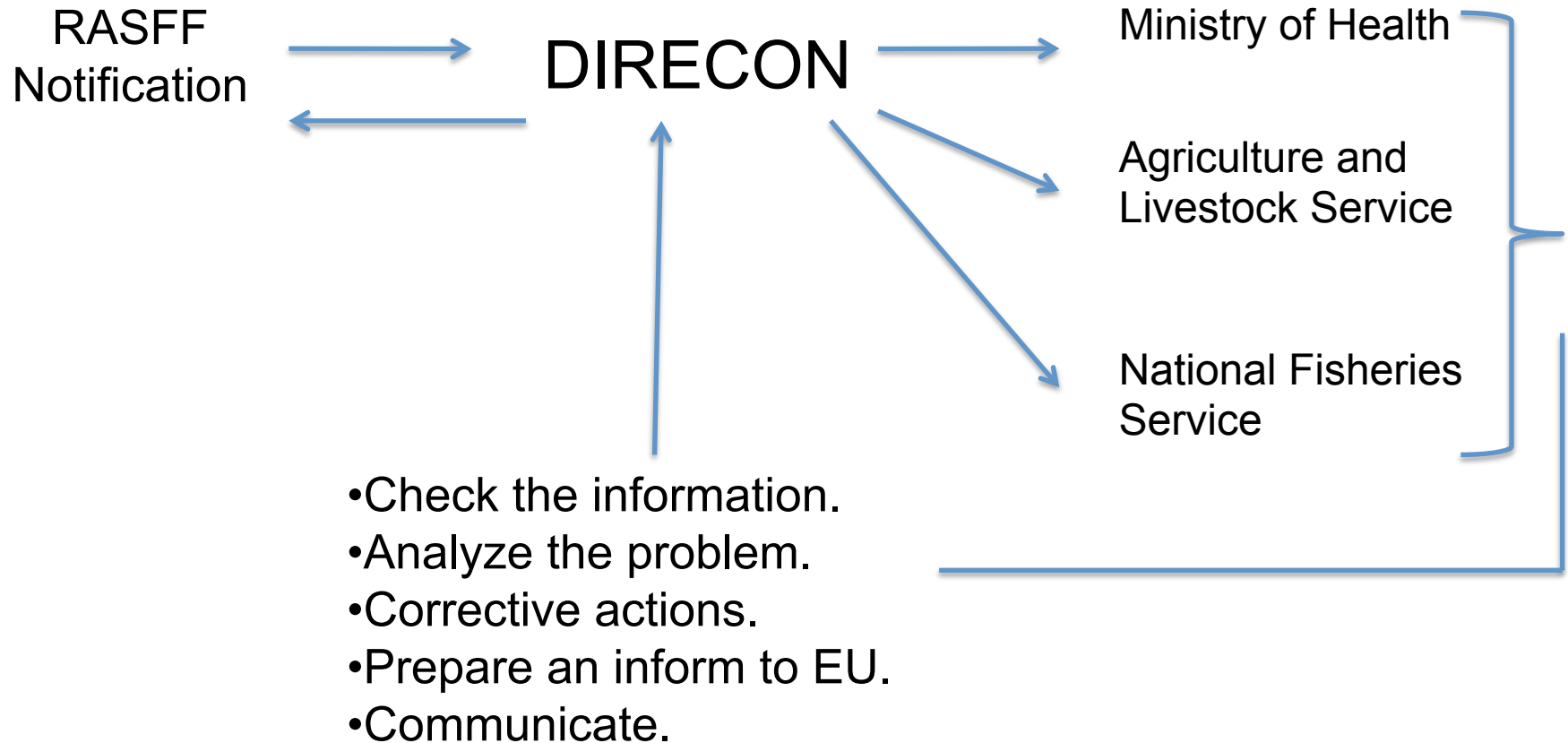
**Exchange  
of  
information**



**142 notifications from 2002 to 2011**

# Managing a RASFF Notification

## Exchange of information Flow Chart



# Incident Management



Partners  
Embassy

Ministry of Foreign Affairs -  
DIRECON



National SPS Commission

Private  
 sector  
 -Associations  
 -Food  
 Industry

Ministry of  
Agriculture

Ministry of  
Health

Ministry of  
Economy

Agriculture  
 and  
 Livestock  
 Service

National  
 Fisheries  
 Service



# Questions?



Dirección General  
de Relaciones  
Económicas  
Internacionales

Ministerio de  
Relaciones Exteriores

APEC FSCF PTIN Incident Management  
Workshop  
Montana, U.S.  
May, 2011

# THANK YOU



Ministerio de  
Salud

Gobierno de Chile

José Miguel Sepúlveda Torres, DVM, MPVM (c)  
Adviser Sanitary and Phytosanitary Subdepartment  
Market Access Department  
Ministry of Foreign Affairs  
Chile  
[jsepulveda@direcon.cl](mailto:jsepulveda@direcon.cl)

Claudio Báez Beltrán B.DVM, MSc  
Department of Food and Nutrition  
Regional Health Secretariat  
Ministry of Health  
CHILE  
[Claudio.baez@redsalud.gov.cl](mailto:Claudio.baez@redsalud.gov.cl)



# PTIN Food Safety Incident Management Workshop

Big Sky, Montana, USA  
14-15 May 2011

Asia-Pacific Economic Cooperation (APEC)  
Food Safety Cooperation Forum (FSCF)  
Partnership Training Institute Network (PTIN)



Asia-Pacific  
Economic Cooperation



**FSCF** Food Safety  
Cooperation Forum  
**PTIN** Partnership Training  
Institute Network



**FOOD** STANDARDS  
Australia New Zealand  
Te Mana Kounga Kai - Ahitereiria me Aotearoa